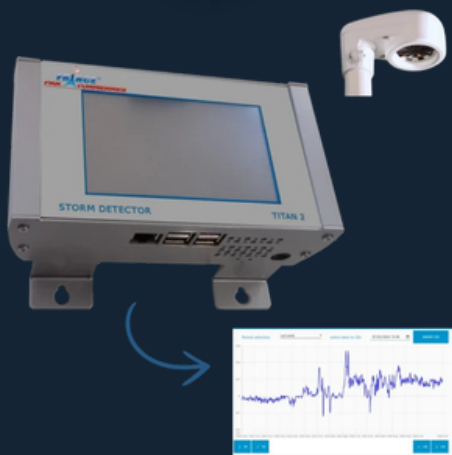


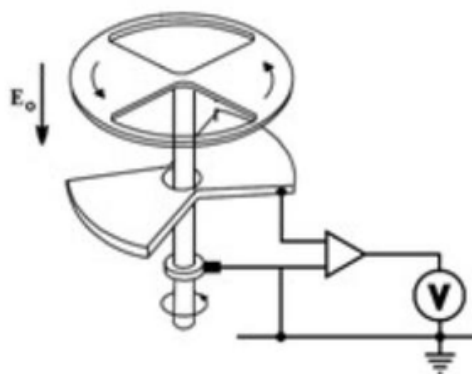
# TECHNICAL DATASHEET

## FEATURES

Reference	80 333
Description	TITAN 2 - Thunderstorm Warning System
Technology	Field mill
Class	1
Functioning	Based on the physical principle of the measurement and the analysis of the electric field at ground level. This parameter is known as the most representative of the risky situations involving a thunderstorm cell. The electric field evolution can be divided into several phases (approach, development, maturity, extinction of the thunderstorm cell).
Included components	Field mill Acquisition unit Connection cable mill > acquisition unit
Not included components	Power supply cable Fixing mast of the mill
Power supply	24 Vcc, 20 to 36 Vcc
Power consumption	1000 mA to 24 Vdc
Detection range	>20 km
Operating temperature	Mill: -20°C à +55°C Unit: 0°C à +50°C
FTWR (Failure To Warn Ratio)	7%
POD <sub>15</sub> (Probability of detection)	68 % (under 15 minutes)



COMPLIES WITH  
IEC 62 793



## COMPLIANCE

IEC 62 793 : 2016

Lightning protection – Thunderstorm warning systems