

TECHNICAL DATASHEET

FEATURES

Reference	13016
Designation	Isolated down conductor FPIC®
Functioning	Allow to connect an ESE air terminal to an earthing system and to virtually reduce the separation distance by 95 cm.
Equivalent distance separation in the air	95 cm
<div> <div> <p>WITHOUT FPIC®</p> </div> <div> <p>WITH FPIC®</p> </div> </div>	
Central component	Twisted aluminum cable
Section	50 mm ²
Semiconductive outer layer	YES
Insulation material	Cross-linked polyethylene (XLPE)
Insulation performance	1 MV
Installation	Aerial

CONCEPT OF ISOLATED LPS

When an installation meets the expected separation distance, the Lightning Protection System (LPS) can be considered isolated. Considering the equivalent separation distance of the isolated down conductor FPIC® ($s_e=95\text{cm}$) and according to the separation distance calculation, this leads to the following maximum installation lengths:

Calculations performed according to the standard NF C 17-102:2011 for an ESE air terminal

Cable Nb. FPIC / ESE	Level I	Level II	Level III + IV
1	11.90 m	15.80 m	23.80 m
2	15.80 m	21.10 m	31.70 m
3	19.80 m	26.40 m	39.60 m

COMPLIANCE

Complies with IEC TS 62561-8
NF EN 62561-8

As part of our process of innovation and improvement, we reserve the right to make changes to shape, features and dimensions without prior notice. Illustrations are therefore non-binding.



A 8 mm

B 25 mm

Packaging 50 m or more spool



Qualifoudre
INERIS
N° 051168729019

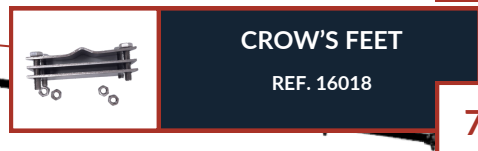
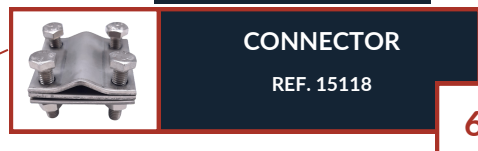
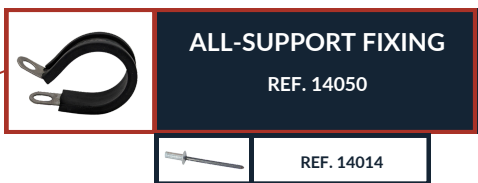
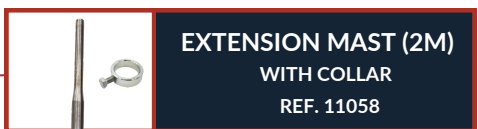
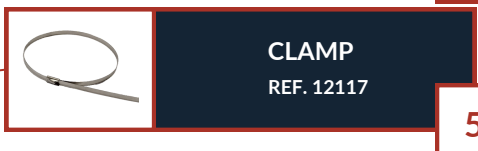
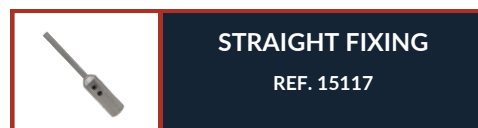
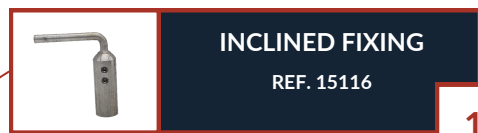


COMPLIES WITH
TS 62561-8
NF EN 62561-2

La FRENCH FAB

TECHNICAL DATASHEET

INSTALLATION EXAMPLE



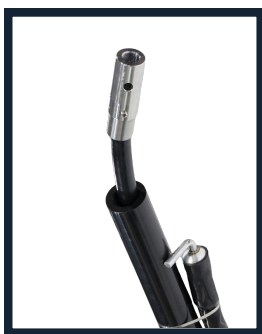
1 TO 4 FPIC®



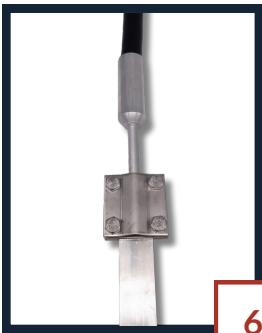
CROW'S FEET



FPIC® IN MAST



CONNECTOR



7

6

1

3

5

6

7