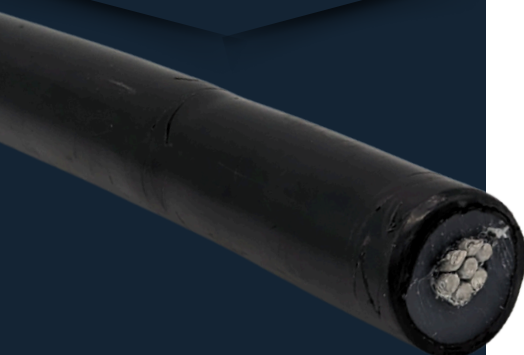


TECHNICAL DATASHEET



A 8 mm

B 25 mm

Packaging 50 m or more spool



COMPLIES WITH
TS 62561-8



FEATURES

Reference	13016
Designation	Isolated down conductor FPIC®
Functioning	Allow to connect an ESE air terminal to an earthing system an to virtually reduce the separation distance by 95 cm.
Equivalent distance separation in the air	95 cm
Central component	Twisted aluminum cable
Section	50 mm ²
Semiconductive outer layer	YES
Insulation material	Cross-linked polyethylene (XLPE)
Insulation performance	1 MV
Installation	Aerial

CONCEPT OF ISOLATED LPS

When an installation meets the expected separation distance, the Lightning Protection System (LPS) can be considered isolated. Considering the equivalent separation distance of the isolated down conductor FPIC® (se=95cm) and according to the separation distance calculation, this leads to the following maximum installation lengths:

Calculations performed according to the standard NFC 17-102:2011 for an ESE air terminal

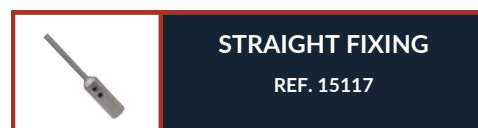
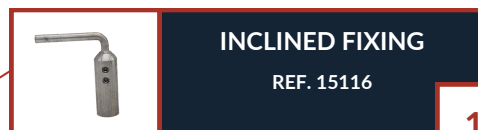
Cable Nb. FPIC / ESE	Level I	Level II	Level III + IV
1	11.90 m	15.80 m	23.80 m
2	15.80 m	21.10 m	31.70 m
3	19.80 m	26.40 m	39.60 m

COMPLIANCE

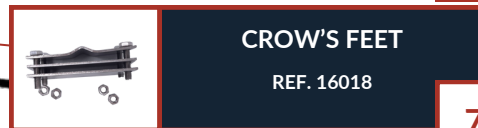
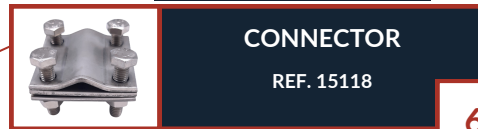
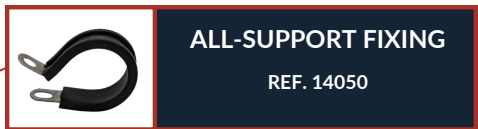
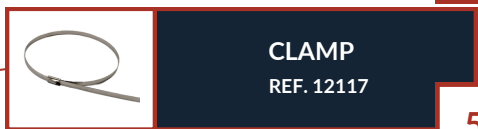
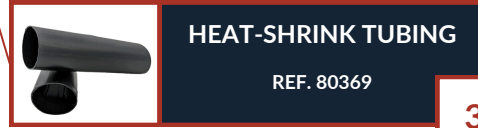
Complies with IEC TS 62561-8

TECHNICAL DATASHEET

INSTALLATION EXAMPLE



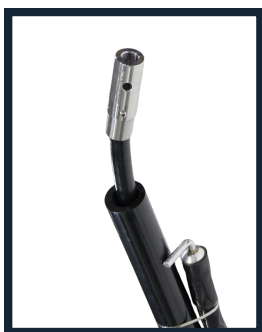
	ISOLATED MAST	4
	ADAPTATER	2
	CLAMPING RING	



1 TO 4 FPIC®



FPIC® IN MAST



CROW'S FEET



CONNECTOR

